



Burg
HOHENZOLLERN



Ancestral seat of the Prussian Royal House

A Mountain of Surprises







It is our pleasure welcoming you,

The Hohenzollern Castle, the ancestral seat of the family dynasty, is situated at the periphery of the Swabian Alb. It is no museum in its traditional sense but a historic as well as a distinct lively place which attracts hundreds of thousands of visitors from all over the world all year round. Besides essential parts of our art collection, including a significant picture gallery, valuable silver and china as well as the Prussian King's Crown, numerous events make the Castle to an attractive cultural institution all year round.

Today's Castle complex was jointly restored by both Hohenzollern lines in the 19th century and is private property up to now. For almost a thousand years it provides temporary housing for the family. To us it means part of home.

Last but not least, it is also its extraordinary location which already prompted Emperor Wilhelm II to proclaim "The panorama from the Hohenzollern Castle is truly worth a journey". It is our great pleasure to invite you to personally discover the landmark of the Zollernalb region with its numerous attractions.

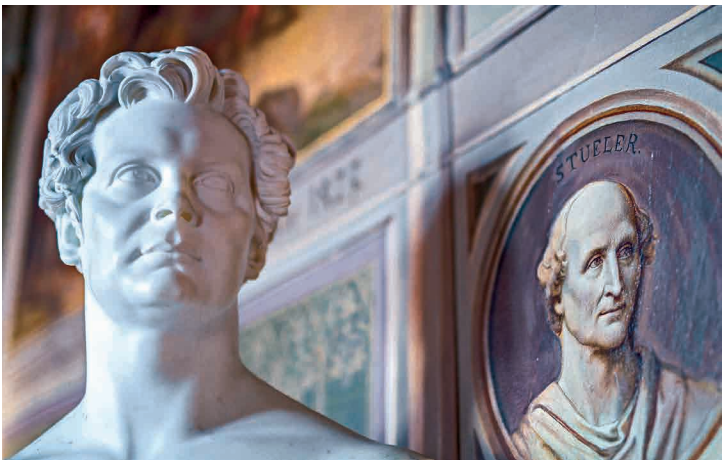
**Georg Friedrich Prince of Prussia
Sophie Princess of Prussia**



Hohenzollern Castle.

A romantic expression
of a royal dream.



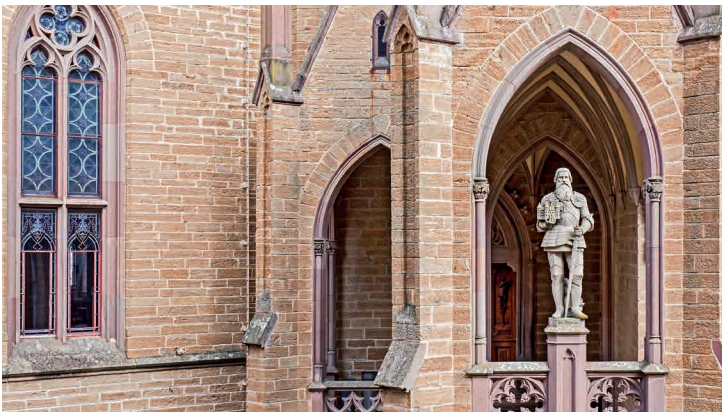


The Hohenzollern dynasty dates back to 1.000 years history. Swabian counts and princes, the kings of Prussia and even the German emperors have their roots here at Hohenzollern Caste.

In 1061 the first members of the family were mentioned in a document. At this time there might have been a proud fortress on Mount Zoller, which was destroyed by war in the 15th century. Shortly afterwards the second castle was built at the same place, which fell to ruin from the 18th century on.

On a beautiful summer evening in July 1819, 23-year old Crown Prince Friedrich Wilhelm of Prussia paid a visit to the ruinous ancestral seat and decided its reconstruction.

Between 1850 and 1867 the king's dream was realized together with his Swabian relatives, the princes of Hohenzollern-Sigmaringen and the architect Friedrich August Stüler. Following the romantic ideal of the time one of the most imposing neo-Gothic castles in Germany was erected.

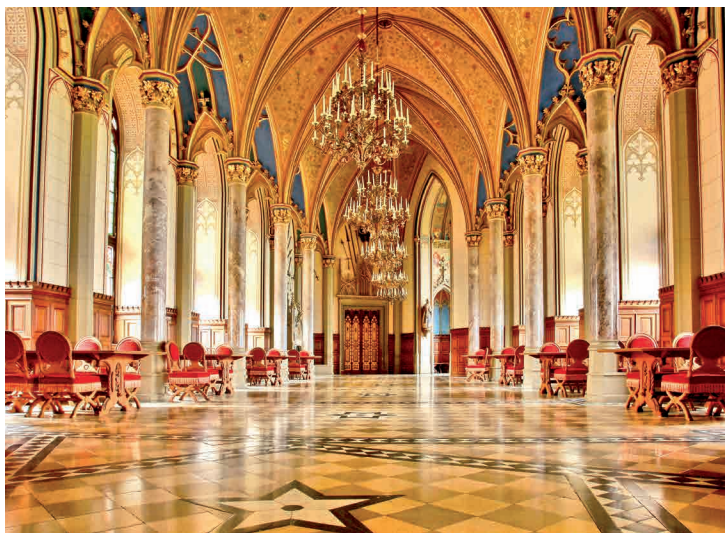




Majestic

views

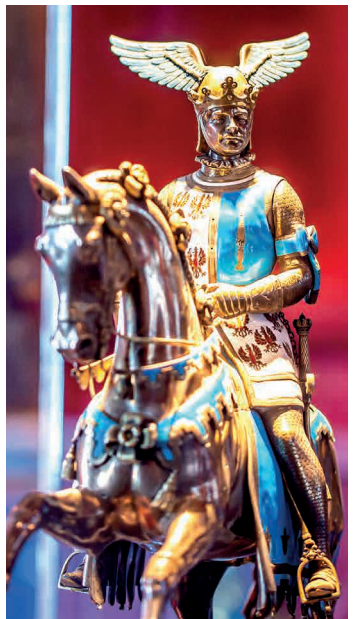
garnished with gold and silver.





The Hohenzollern Castle is majestically located on the conical Mount Zoller and dominates the Zollernalb region, which is named after the castle. Its bastions offer breathtaking panoramic views stretching over more than 100 kilometres.

In 1952 the splendid halls and rooms have been furnished by Prince Louis Ferdinand of Prussia (1907–1994) with valuable works of arts pertaining to the history of Prussian kings and German emperors. In addition to the paintings of well-known artists like Antoine Pesne, Élisabeth Vigée-Lebrun, Anton von Werner and Franz von Lenbach, there is a display of precious porcelain, gold- and silversmith works from the 17th to the 19th centuries as well as historical garments, such as the uniform worn by Friedrich the Great during the battle near Kunersdorf.

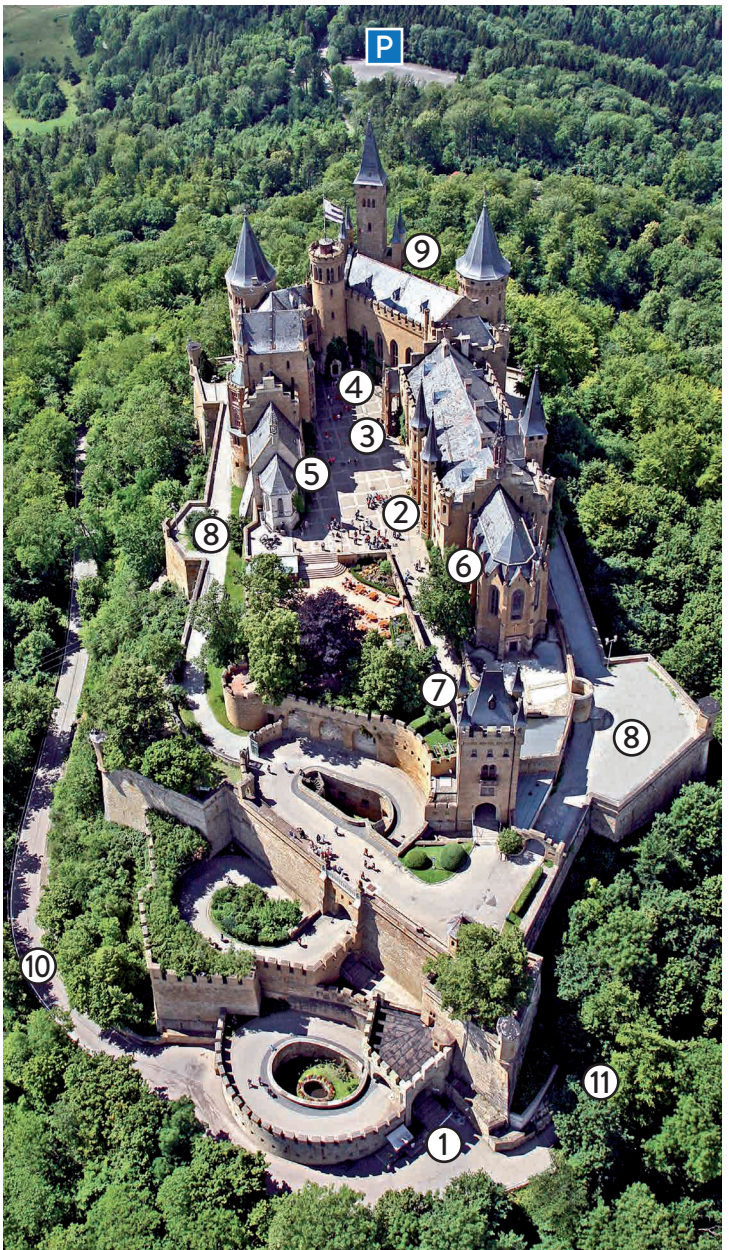




While the Swabian part of the Hohenzollern family remained catholic, the Prussian line became protestant during the Reformation. That's why the castle houses two churches: The catholic St. Michael's Chapel originates from the previous castle of the 15th century with stained glass windows even from the 13th century. The protestant Christ Chapel was erected on special request by King Friedrich Wilhelm IV of Prussia during the reconstruction of the third castle and was richly ornamented with elaborately designed windows and wall paintings. Both chapels are still used for church services and weddings.

From the courtyard a staircase leads down to the silver cellar and the casemates. The medieval shelters were also part of a former secret passage. Today the passage leads under the castle to the building's backside on the bastion.





- 1 Eagle Gate (entrance)
- 2 Information office, souvenir shop, restaurant, toilet
- 3 Entrance show rooms
- 4 Entrance cellar + casemates
- 5 Catholic Chapel
- 6 Protestant Chapel

- 7 Toilet for disabled persons
- 8 Bastion round walk
- 9 Exit casemates on the bastion round walk
- 10 Street parking – castle
- 11 Foot path parking – castle



Café Restaurant

Hohenzollern Castle





In the Hohenzollern Castle Café Restaurant the chef offers regional dishes and uses therefore regional ingredients such as lentils of the Swabian Alb.

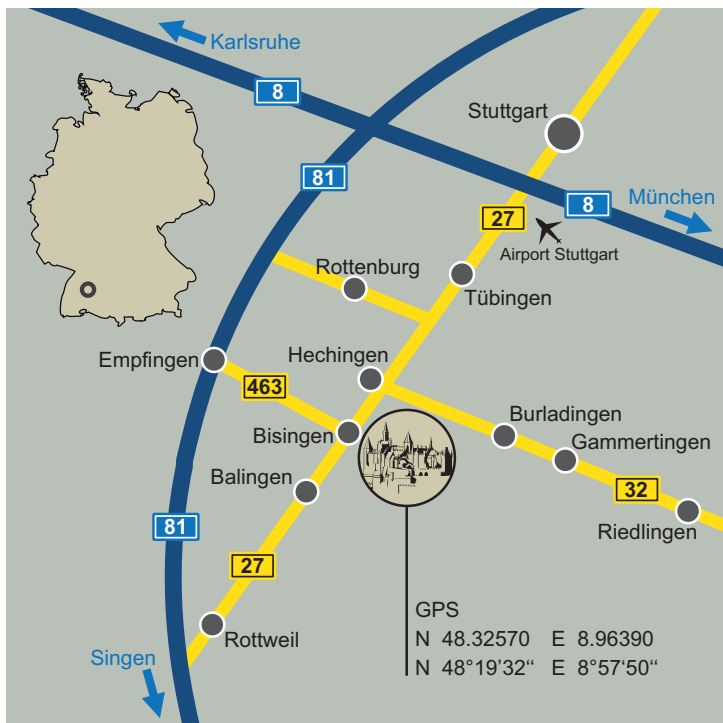
For the sweet loving palates the restaurant holds a choice of delicious tortes and cakes from the local confectioner, which are delivered freshly every day.

In the “Zollernalbstueble” of the Café Restaurant a group of 45 persons has room to comfortably enjoy a meal. The separate “Hunting Room” offers small groups up to 10 persons an informal atmosphere. The “Berlin Room“ is best suited for festivities up to 70 persons. Additionally, this room can be widened with the “Fridericus Zimmer“ for another 30 guests.

During summer the restaurant entertains in the castle’s garden one of the most beautiful and highest elevated beer gardens in the Zollernalb region with a small menu. Here and in the restaurant the Preußens Pilsener, the Hohenzollern beer, is served.



Your way to Hohenzollern Castle:



Tickets | Parking lot | Shuttle bus

Tickets for Hohenzollern Castle are available in the Online-Ticket-Portal at www.burg-hohenzollern.com.

From the parking lot to the castle's entrance it takes about 20 minutes uphill on foot. Alternatively a shuttle bus can be used which runs every 10 minutes.

Opening times

Daily 10:00 – 17:00 hrs*

*Deviations possible:
Information about the actual times and the availability of tickets are displayed in the Online-Ticket-Portal.

Days of rest: 24.+31. December

Contact

Burg Hohenzollern
Information
72379 Burg Hohenzollern

Germany

Phone: +49 (0) 7471 . 2428
www.burg-hohenzollern.com
info@burg-hohenzollern.com